

L&P GDL Property

Lucas Valdivia Garcia St. 100, Alamo Industrial,
San Pedro Tlaquepaque, Jalisco, Mexico

Lucas Valdivia

Lauro Badillo

↖ ↗ Available
↙ ↘ Property for Sale

TOTAL LAND SIZE

22,231 M² / 5.49 AC

TOTAL BUILDING SIZE

11,000 M² / 118,404 FT²



click / scan
for location

JUAN FELIPE ZAMORA

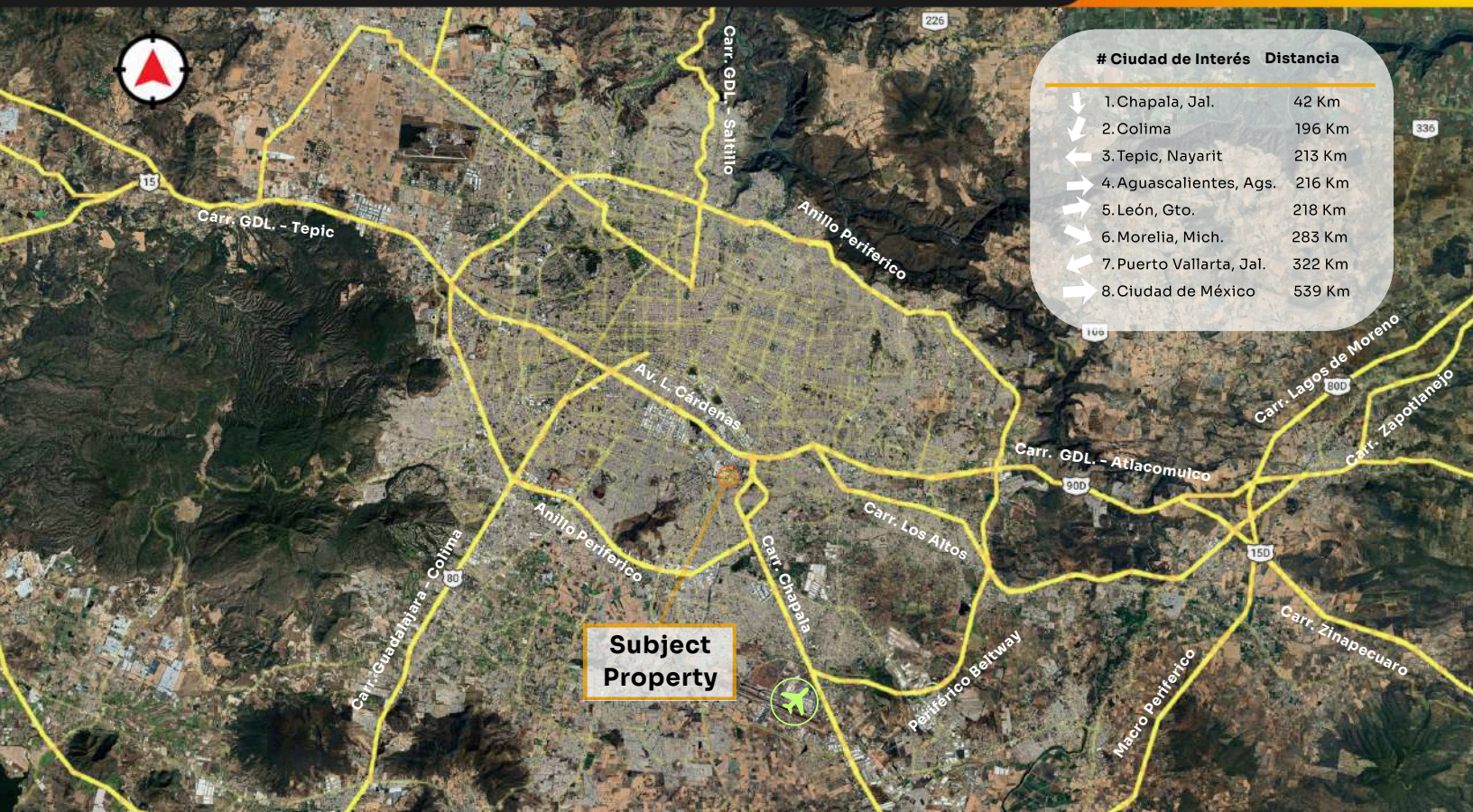
+52 (81) 2621 7356

juan.zamora@select-rs.com

ANDRES CAMACHO

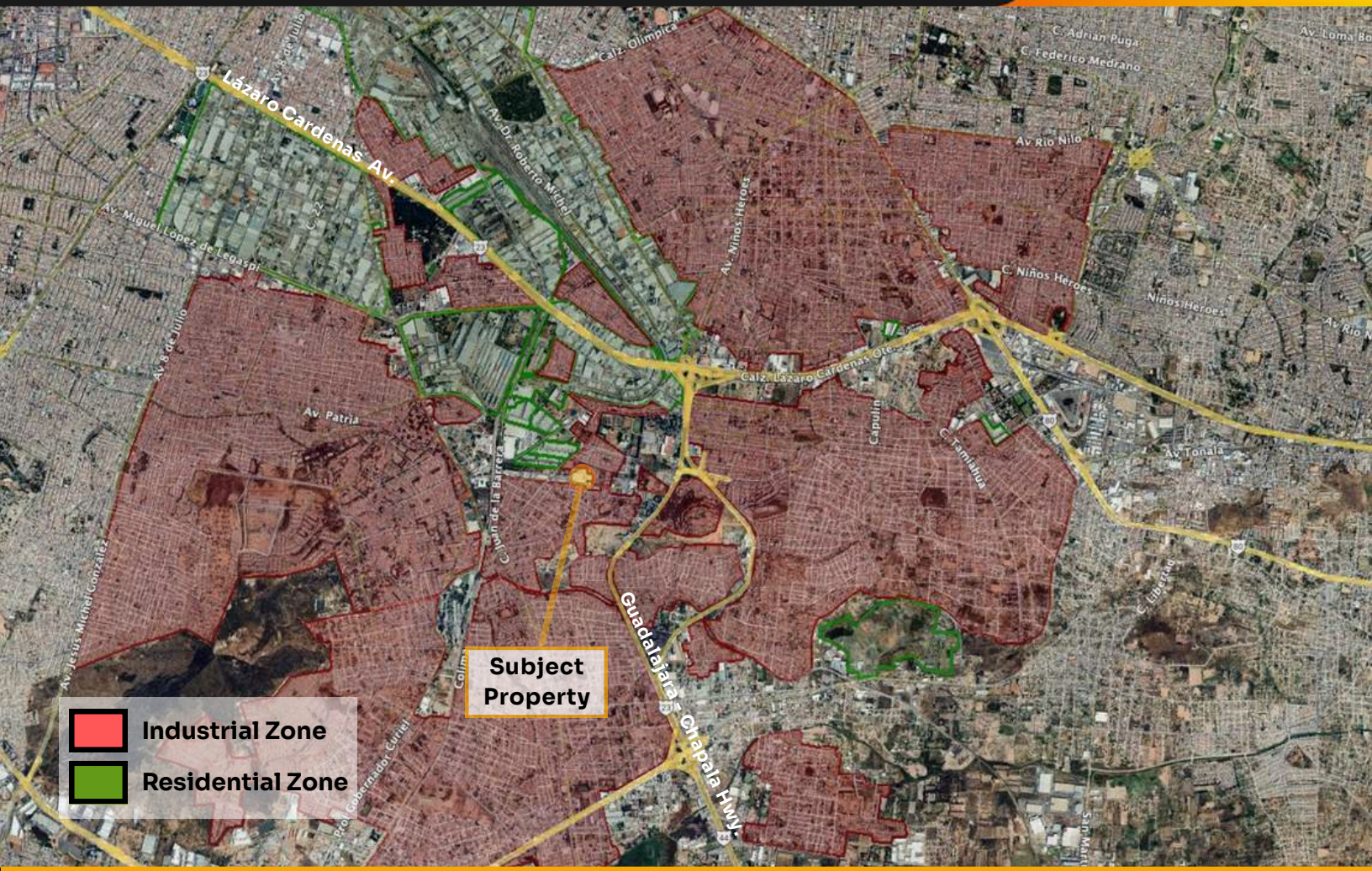
+52 (81) 1880 1531

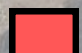
andres.camacho@select-rs.com



Nearby Industrial Parks & Corporate Neighbors






-  Industrial Zone
-  Residential Zone

Subject Property

Current Road Access to the Property

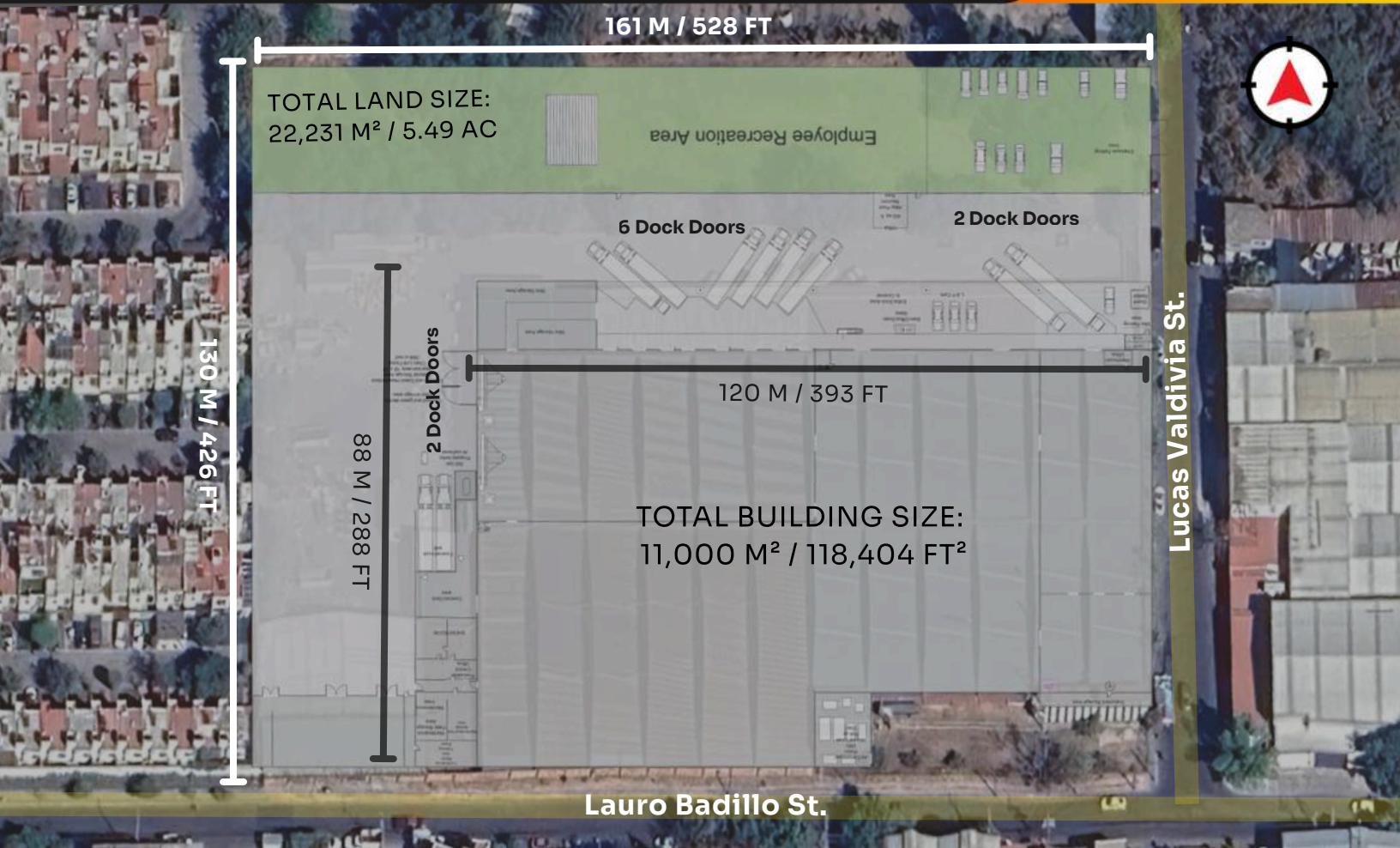


 **ACCESS**
GUADALAJARA - CHAPALA HWY.

Subject Property

500 M

Property Highlights



★ Total Land Size
22,231 M² / 5.49 AC

★ Voice & Data
Available

★ Sewer
Available

★ Gas
TBD

★ Total Building Size
11,000 M² / 118,404 FT²

★ Total Office Size
TBD

★ Warehouse Size:
TBD

★ Building Dimensions
TBD

★ Floor Thickness
TBD

★ Skylights
3%

★ Roof
Metal Sheet

★ KVAs Rights Available
TBD

★ Electrical Transformer
TBD

★ Clear Height
TBD

★ Lighting
TBD

★ Drive In Doors
TBD

★ Loading Docks
10

★ Wall Type
Concrete Block & Metal Sheet

★ Fire Protection System
TBD

Workforce Overview

Located in the Antigua Zona Industrial submarket, within the municipality of Tlaquepaque one of the most established industrial areas in the Guadalajara Metropolitan Area. Immediate access to a dense urban environment and a consolidated labor base supported by nearby residential communities.



5 million +
combined
population

Surrounding municipalities including Guadalajara, Zapopan, Tonalá, and Tlajomulco, provide a large and diverse workforce experienced in manufacturing, logistics, distribution, and light industrial operations.



~400,231 working-
age population
(Within a 5 km radius)

- Guadalajara Metropolitan Area: 5,000,000+ inhabitants
- Tlaquepaque: ~687,127 inhabitants
- Guadalajara: ~1,385,629 inhabitants



Current Property Conditions

