

# Kraem Building

Logistik 1 Industrial Park,  
Villa de Reyes, San Luis Potosí



**↗ Available Building  
↘ for Sale**

**BUILDING SIZE:**

**32,267 SQFT / 2,997 SQM**

**TOTAL LAND AREA:**

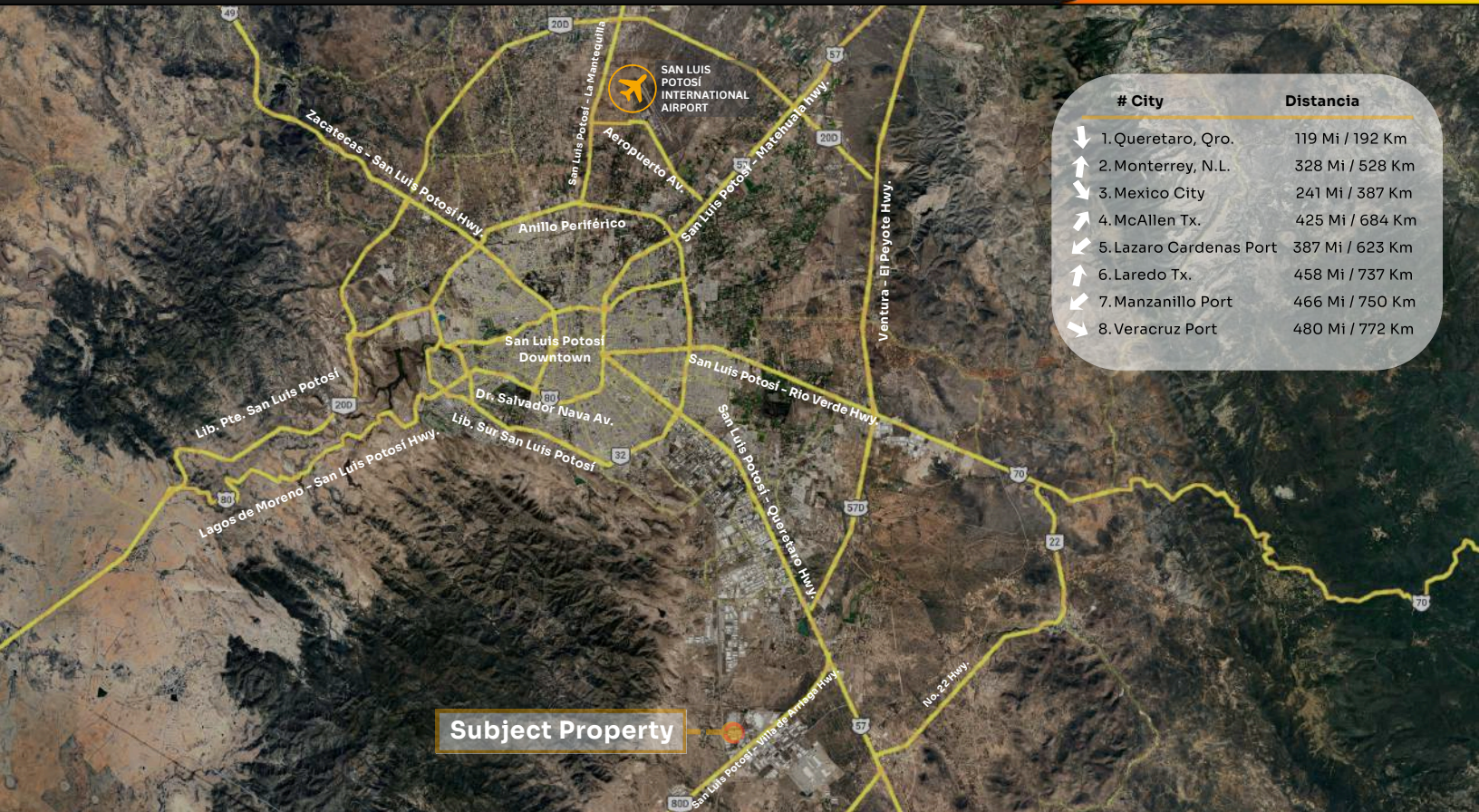
**108,060 SQFT / 10,039 SQM**



[click / scan  
for location](#)



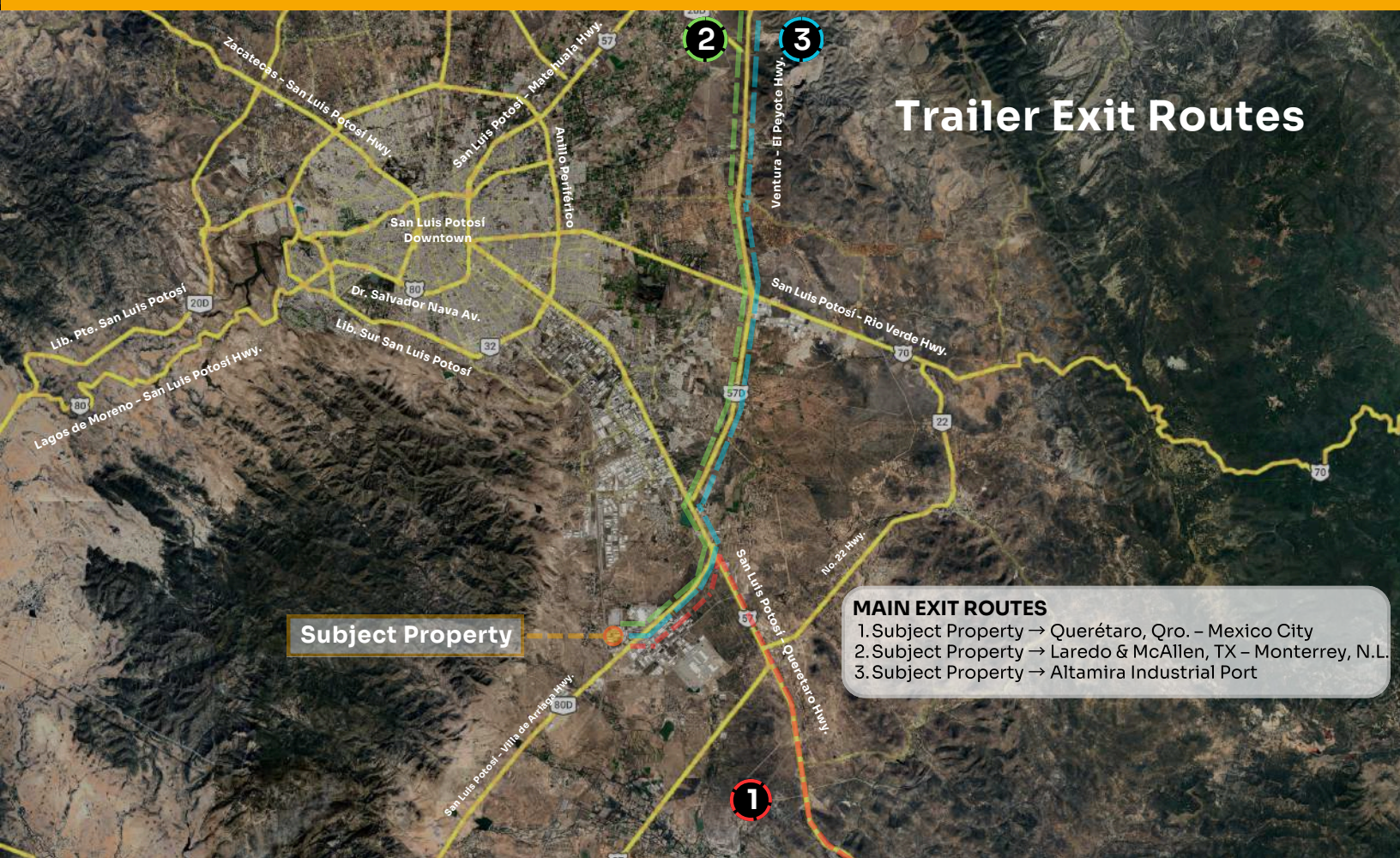
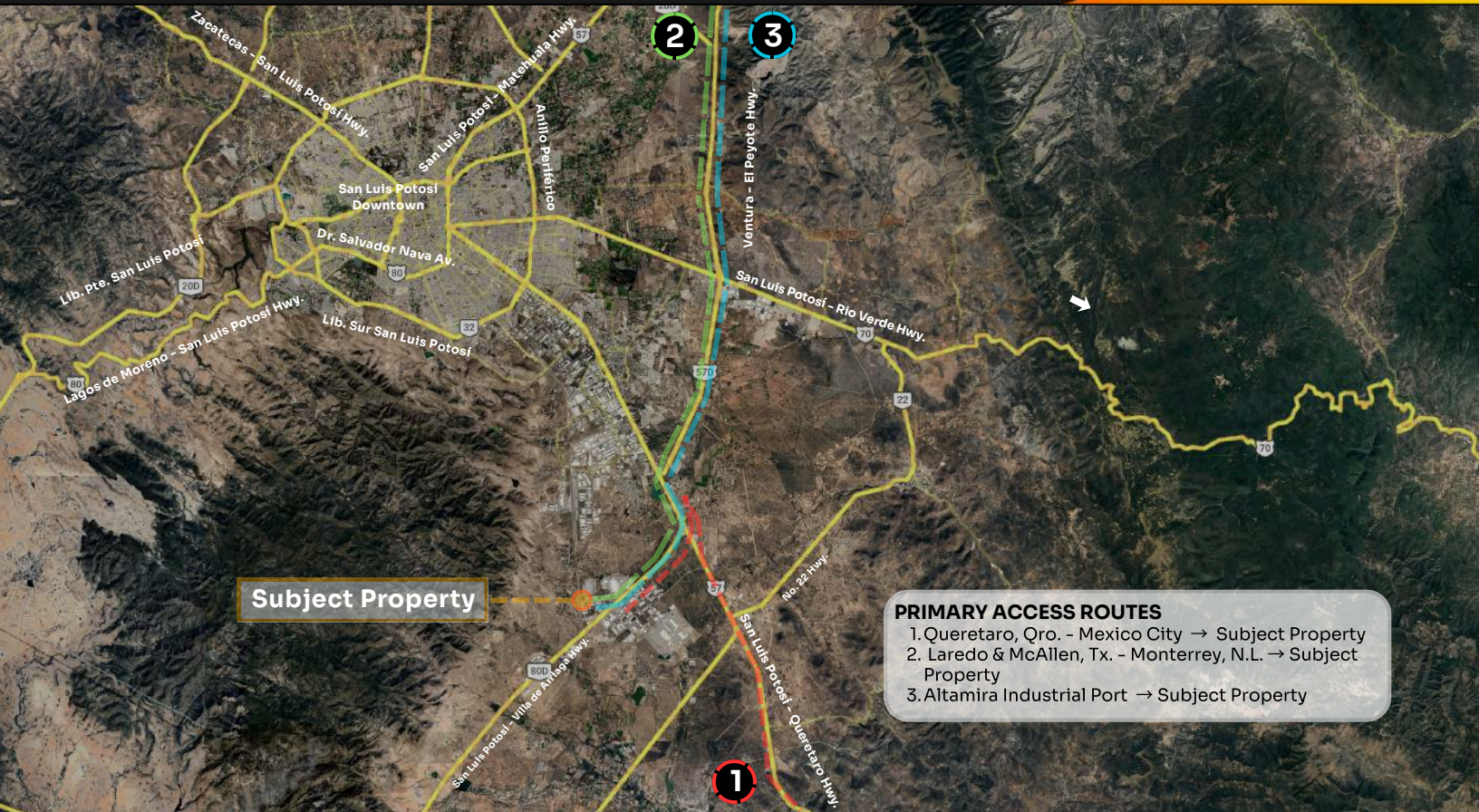
# Location



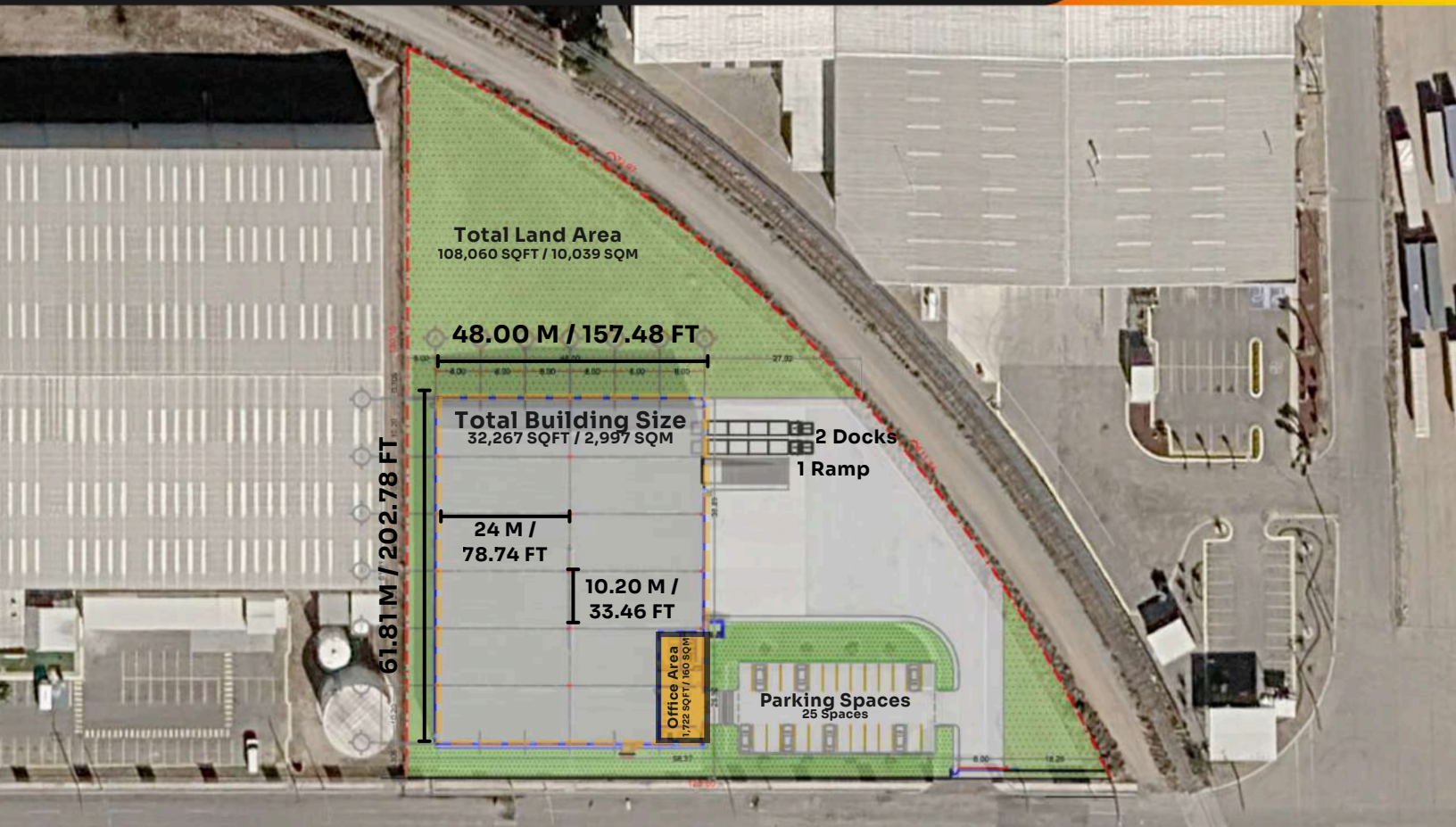
# City	Distancia
1. Queretaro, Qro.	119 Mi / 192 Km
2. Monterrey, N.L.	328 Mi / 528 Km
3. Mexico City	241 Mi / 387 Km
4. McAllen Tx.	425 Mi / 684 Km
5. Lazaro Cardenas Port	387 Mi / 623 Km
6. Laredo Tx.	458 Mi / 737 Km
7. Manzanillo Port	466 Mi / 750 Km
8. Veracruz Port	480 Mi / 772 Km

# Corporate Neighbors






# Building Overview



 **Total Land Area**  
108,060 SQFT / 10,039 SQM

 **Total Building Size**  
32,267 SQFT / 2,997 SQM


 **Floor**  
6 IN / 15.24 CM Reinforced  
Concrete Floor Slab

 **Fire Protection System**  
N/A

 **Office Area**  
1,722 SQFT / 160 SQM

 **Wall Type**  
Concrete Precast


 **Electrical Transformer**  
225 Kvas

 **Building Dimensions**  
202.78 FT X 157.48 FT /  
61.81 M X 48.00 M

 **Dock Doors**  
2

 **Skylights**  
5%

 **Column Spacing**  
33.46 x 78.74 FT / 10.20 X 24 M

 **Access Ramp**  
1

 **Lighting**  
Metal Halide

 **Clear Height**  
27.39 FT / 8.35 M

 **Parking Spaces**  
25

 **Roof**  
KR 18

