



Close Access to Anzalduas Int. Bridge



WorkForce Close to this Building

EP BUILDING

Maquilpark, Reynosa, Tamaulipas



Available for lease

145,423 SQFT / 13,510 SQM



[click / scan for location](#)



Building Overview

Total Building Size
145,423 SQFT / 13,510 SQM

Total Land Size
7.05 AC. / 2.85 HAS.

Warehouse Area 1
92,459 SQFT / 8,589 SQM

Lobby
917 SQFT / 85 SQM

North Area
10,202 SQFT / 947 SQM

South Area
5,059 SQFT / 470 SQM

Substation Area
562 SQFT / 52 SQM

West Area
938 SQFT / 87 SQM

Office Area
19,339 SQFT / 1,733 SQM

Terrace
752 SQFT / 69 SQM

Warehouse Area 2
2,066 SQFT / 192 SQM

Column Spacing
40.4 x 28.3 FT /
12.65 x 8.63 M

Clear Height
17.97 - 28.54 FT / 5.48 - 8.70 M

Floor
6 IN / 15 CM / 250 KG/CM2

Dock Door
9

Ramps
1

Parking
37 Spaces

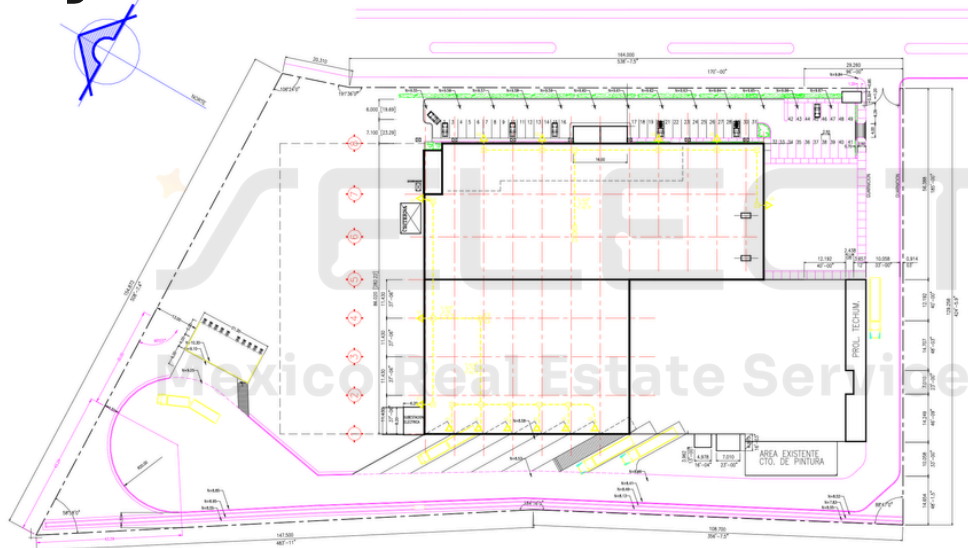
Electric Substation
(1) 1,500 KVA'S

Lighting
Multiple Types

Construction Type
Block

HVAC
(8) 400 TONS, (4) 100 TONS & (2) 50 TONS

Layout



[click / scan for layout](#)



[Chat With Us](#)



click / scan
for location

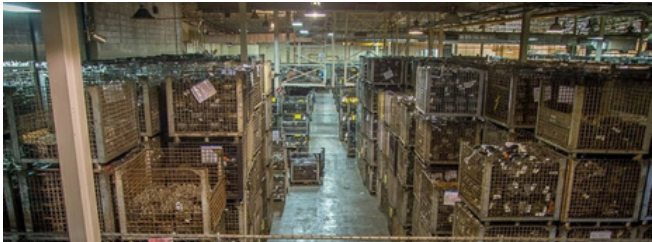
EP BUILDING
Maquilpark,
Reynosa, Tamaulipas



Corporate Neighbors



Pictures



SELECT

Mexico Real Estate Services

www.select-rs.com



Chat With Us

PAUL DOUGLASS



+1 (956) 802 4405

JUAN FELIPE ZAMORA



+52 (81) 2621 7356



juan.zamora@select-rs.com



US Phone: +1 (833) 227 7922

Mx Number: +52 (899) 929 3830