



New Building



Cross Dock Building

SPEC LT

Av. Las Torres,
Santa Catarina, N.L



[click / scan
for location](#)



Available for lease

176,528.96 SQF / 16,400 SQM

Building Overview

Total Building Size
176,528.96 SQF / 16,400 SQM

Divisible

Subject to RFP

Office Space

According to the Client Needs

Building Dimensions

431.16 FT X 298.62 FT
131.42 M X 91.02 M

Column Spacing

71.8 X 59 FT
21.87 x 18 M

Clear Height

32 FT / 9.75 M

Roof

KR-18 with R-10

Skylights

3%

Lighting

LED @200 Luxes

Ventilation

According to the Client Needs

Floor Thickness

6 IN / 15.24 CM

Reinforced Floor

Access Ramps

2

Docks

14 + 6 Knockouts

Car Parkings Spaces

92

Type of Construction

Tilt-Up

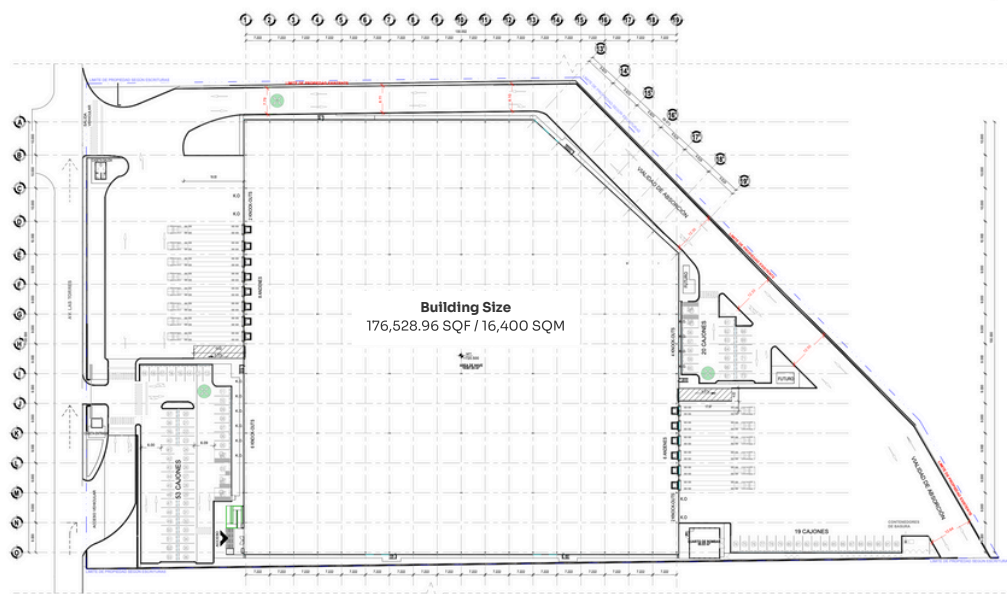
KVA's Rights

1,000

Fire Protection System

1,0 According to the Client Needs

Layout



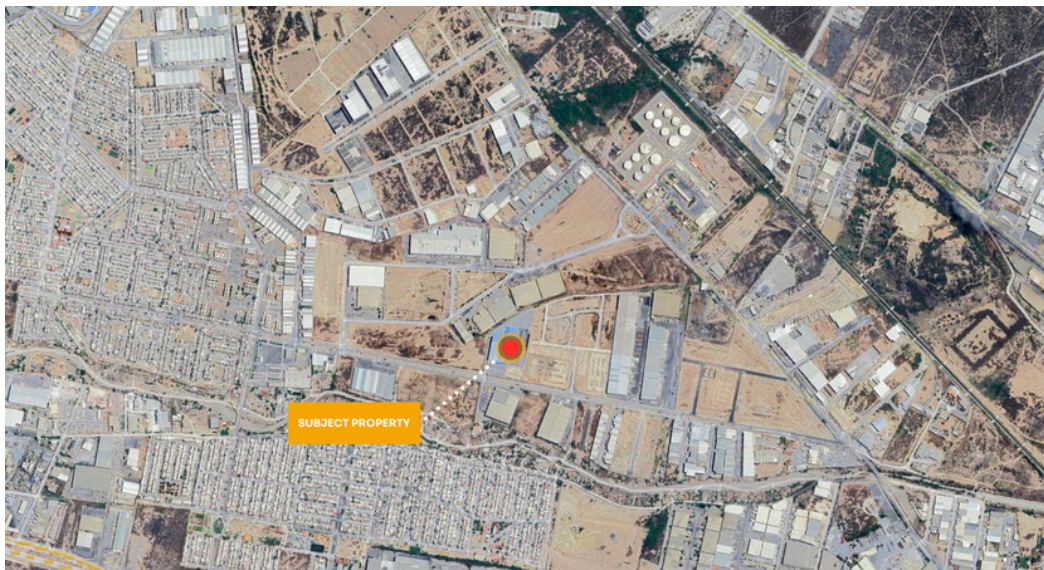
[Chat With Us](#)



SPEC LT
 Av. Las Torres,
 Santa Catarina, N.L.



Corporate Neighbors



Pictures



SELECT
 Mexico Real Estate Services

www.select-rs.com



ALEJANDRO ANAYA +52 (81) 1909 3908

alex.anaya@select-rs.com

JUAN FELIPE ZAMORA +52 (81) 2621 7356

juan.zamora@select-rs.com

US Phone: +1 (833) 227 7922
 Mx Number: +52 (81) 8363 2828