



Kraem Building

Logistik 1 Industrial Park,
Villa de Reyes, San Luis Potosí



[clic / scan](#)
for location



Available for sale
30,136 SQFT / 2,799 SQM

Building Overview

Total Building Size
30,136 SQFT / 2,799 SQM

Total Land Area

107,895.28 SQFT / 10,023.80 SQM

Building Dimensions

202.78 FT X 157.48 FT / 61.81 M X 48.00 M

Column Spacing

33.46 FT X 78.74 FT / 10.20 M X 24 M

Clear Height

27.39 FT / 8.35 M

Office Space

1,722 SQF / 160 SQM

Floor Thickness

6 IN / 15.24 CM Reinforced

Concrete Floor Slab

Dock Doors

2 Dock High

Ramps

1 Drive in Ramp

Parking Spaces

25 Spaces

Fire Protection System

N/A

Electrical Substation

225 KVA's Electrical Substation

Lighting

Metal Halide + 5% Skylights

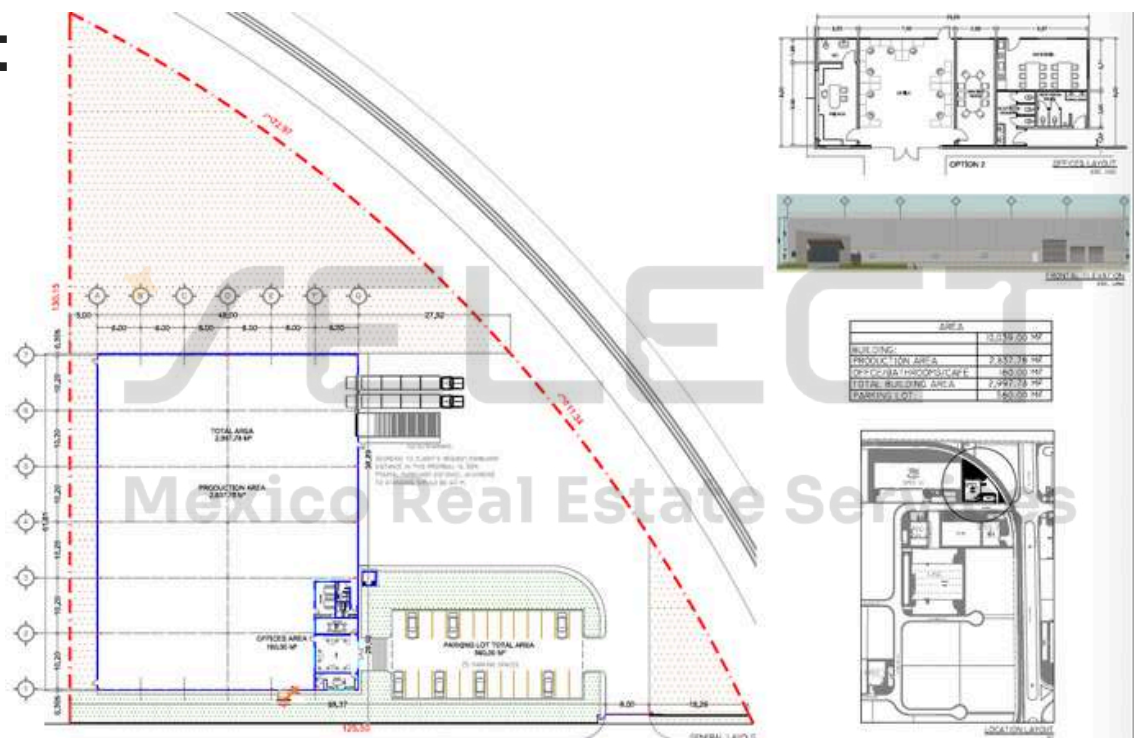
Wall Type

Concrete Precast

Roof

KR-18

Layout



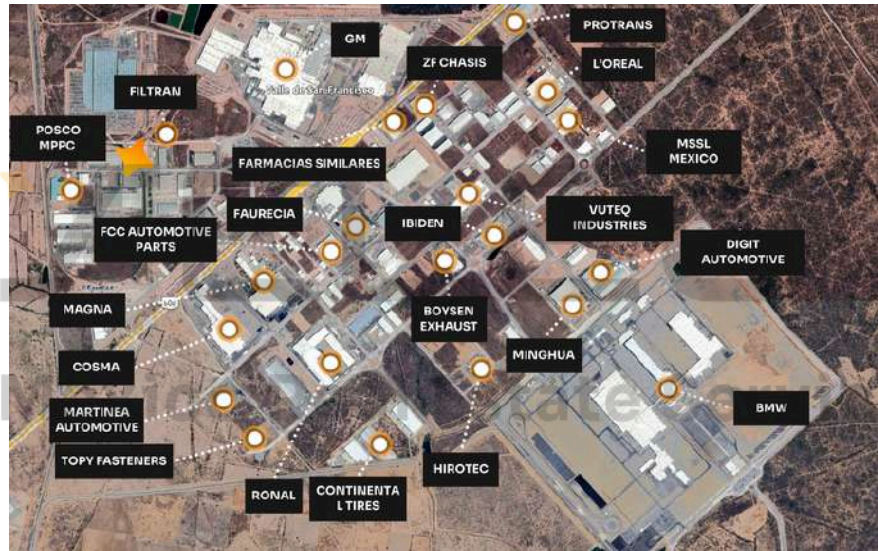
Chat With Us



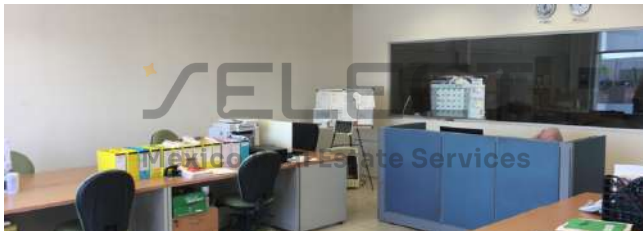
Kraem Building
 Logistik 1 Industrial Park,
 Villa de Reyes, San Luis Potosí



Corporate Neighbors



Pictures



SELECT
 Mexico Real Estate Services

www.select-rs.com



ALEJANDRO ANAYA +52 (81) 1909 3908

alex.anaya@select-rs.com

JUAN PABLO NAVA +52 (444) 803 8679

juan.nava@select-rs.com

US Phone: +1 (833) 227 7922
 Mx Number: +52 (899) 929 3830