



Kraem Building

Logistik 1 Industrial Park,
Villa de Reyes, San Luis Potosí



[clic / scan](#)
[for location](#)



Available for lease
30,136 SQF / 2,997.78 SQM

Building Overview

Total Building Size
30,136.58 SF / 2,799.78 SM

Total Land Area

107,895.28 SF/10,023.80 SM

Building Dimensions

02.78 FT X 157.48 FT / 61.81 M X 48.00 M

Column Spacing

33.46 FT X 78.74 FT / 10.20 M X 24 M

Clear Height

27.39 FT / 8.35 M

Building Dimensions

202.12 x 157.49 FT / 61.60 x 48 M

Column Spacing

6.6 x 33.6 FT / 26.35 x 10.20 M

Floor Thickness

6 IN / 15.24 CM Reinforced

Concrete Floor Slab

Dock Doors

2 Dock High

Ramps

1 Drive in Ramp

Parking Spaces

25

Electrical Substation

225 KVA's Electrical Substation

Lighting

Metal Halide + 5% Skylights

Wall Type

Concrete Precast

Layout



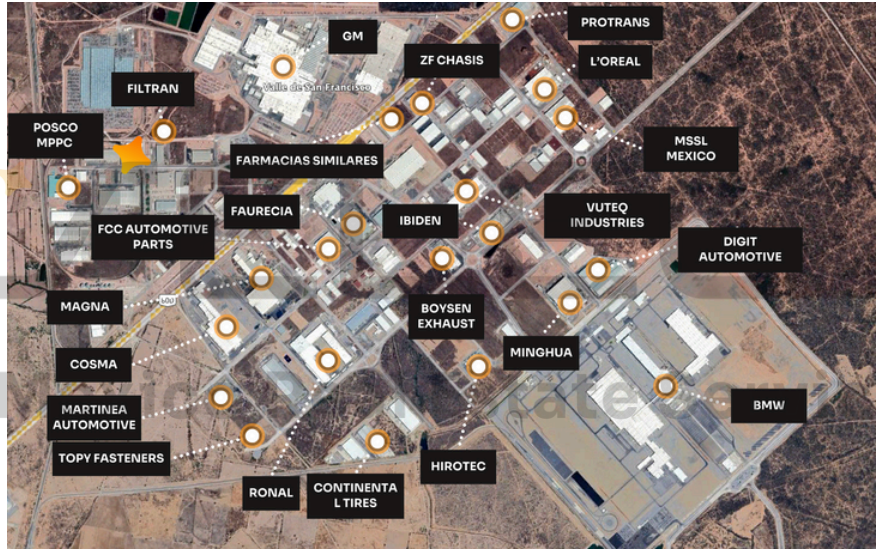
Chat With Us



Kraem Building
 Logistik 1 Industrial Park,
 Villa de Reyes, San Luis Potosí



Corporate Neighbors



Pictures



SELECT
 Mexico Real Estate Services

www.select-rs.com



ALEJANDRO ANAYA +52 (81) 1909 3908

alex.anaya@select-rs.com

JUAN PABLO NAVA +52 (444) 803 8679

juan.nava@select-rs.com

US Phone: +1 (833) 227 7922
 Mx Number: +52 (899) 929 3830